

**WILSON
STAINLESS**

TUBO Y CONEXIONES DE ACERO INOXIDABLE

WILSON STAINLESS

CONEXIONES
SOCKETWELD

CONEXIONES ROSCADAS

CONEXIONES FUNDIDAS

BRIDAS FORJADAS
150 LIBRAS

BRIDAS FORJADAS
300 LIBRAS

TUBING SIN COSTURA

PIPE SIN COSTURA

PIPE SIN COSTURA ASTM A 312

DIÁMETRO NOMINAL		Céd.	DIÁMETRO EXT.		ESPESOR DE PARED		PESO TEORICO	PRESIÓN DE RUPTURA		PRESIÓN INTERIOR DE TRABAJO		PRESIÓN DE APLASTAMIENTO		PRESIÓN EXTERIOR DE TRABAJO	
Pulg.	mm.		pulg.	mm.	pulg.	mm.		PSI	Kg/cm ²	PSI	Kg/cm ²	PSI	Kg/cm ²	PSI	Kg/cm ²
1/4"	6,35	40	0,540	13,716	0,088	2,24	0,62	23893	1680	5973	420	9557	672	2389	168
			80	0,540	*	0,119	3,02	0,79	34111	2398	8528	599	13644	959	3411
3/8"	9,530	40	0,675	17,145	0,091	2,31	0,84	19267	1354	4817	339	7707	542	1927	135
			80	0,675	*	0,126	3,20	1,09	27978	1967	6995	492	11191	787	2798
1/2"	12,700	10	0,840	21,3436	0,083	2,11	0,99	13680	962	3420	240	5472	385	1368	96
		40	0,840	*	0,109	2,77	1,25	18461	1298	4615	324	7384	519	1846	130
		80	0,840	*	0,147	3,73	1,61	25945	1824	6486	456	10378	730	2594	182
3/4"	19,050	10	1,050	26,670	0,083	2,11	1,26	10759	756	2690	189	4304	303	1076	76
		40	1,050	*	0,113	2,87	1,67	15014	1055	3754	264	6006	422	1501	106
		80	1,050	*	0,154	3,91	2,18	21186	1489	5296	372	8474	596	2119	149
1"	25,400	10	1,315	33,401	0,109	2,77	2,07	11319	796	2830	199	4528	318	1132	80
		40	1,315	*	0,133	3,38	2,48	14031	986	3508	247	5612	395	1403	99
		80	1,315	*	0,179	4,55	3,21	19476	1369	4869	342	7791	548	1948	137
1 1/4"	31,750	10	1,600	42,164	0,109	2,77	2,67	9187	646	2297	161	3675	258	919	65
		40	1,600	*	0,140	3,56	3,36	11996	843	2999	211	4798	337	1200	84
		80	1,600	*	0,191	4,85	4,43	16827	1183	4207	296	6731	473	1683	118
1 1/2"	38,100	10	1,900	48,260	0,109	2,77	3,08	7666	539	1917	135	3067	216	767	54
		40	1,900	*	0,145	3,68	4,02	10363	729	2591	182	4145	291	1036	73
		80	1,900	*	0,200	5,08	5,37	14655	1030	3664	258	5862	412	1466	103
2"	50,800	10	2,375	60,33	0,109	2,77	3,9	6075	427	1519	107	2430	171	607	43
		40	2,375	*	0,154	3,91	5,4	8720	613	2180	153	3488	245	872	61
		80	2,375	*	0,218	5,54	7,46	12631	888	3158	222	5052	355	1263	89
2 1/2"	63,500	10	2,875	73,025	0,120	3,05	5,22	5506	387	1376	97	2202	155	551	39
		40	2,875	*	0,203	5,16	8,57	9542	671	2385	168	3817	268	954	67
		80	2,875	*	0,276	7,01	11,33	13258	932	3315	233	5303	373	1326	93
3"	76,200	10	3,500	88,900	0,120	3,05	6,41	4495	316	1124	79	1798	126	449	32
		40	3,500	*	0,216	5,49	11,21	8277	582	2069	145	3311	233	828	58
		80	3,500	*	0,300	7,62	15,17	11733	825	2933	206	4693	330	1173	82
4"	101,600	10	4,500	114,300	0,120	3,05	8,3	3474	244	869	61	1390	98	347	24
		40	4,500	*	0,237	6,02	15,96	7010	493	1753	123	2804	197	701	49
		80	4,500	*	0,337	8,56	22,17	10157	714	2539	179	4063	286	1016	71
6"	152,400	10	6,625	168,275	0,134	3,4	13,74	2621	184	655	46	1049	74	262	18
		40	6,625	*	0,280	7,11	28,07	5577	392	1394	98	2231	157	558	39
		80	6,625	*	0,432	10,97	42,28	8772	617	2193	154	3509	247	877	62
8"	203,200	10	8,625	219,075	0,148	3,76	19,83	2218	156	555	39	887	62	222	16
		40	8,625	*	0,322	8,18	42,25	4907	345	1227	86	1963	138	491	34
10"	254,000	10	10,750	273,050	0,165	4,16	27,6	1981	139	495	35	793	56	198	14
		40	10,750	*	0,365	9,27	59,91	4450	313	1112	78	1780	125	445	31
12"	304,800	10	12,750	323,85	0,180	4,57	35,75	1821	128	455	32	728	51	182	13
		40	12,750	*	0,375	9,52	73,34	3840	270	960	67	1536	108	384	27



TUBING SIN COSTURA ASTM A 213/269



WILSON STAINLESS

CONEXIONES SOCKETWELD

CONEXIONES ROSCADAS

CONEXIONES FUNDIDAS

BRIDAS FORJADAS 150 LIBRAS

BRIDAS FORJADAS 300 LIBRAS

TUBING SIN COSTURA

PIPE SIN COSTURA

PRESIÓN TEÓRICA DE RUPTURA

PESO TEÓRICO (Kg./m)

CALIBRE	22	20	18	16	14	12	CALIBRE	22	20	18	16	14	12
ESPESOR	0.028	0.035	0.049	0.065	0.083	0.109	ESPESOR	0.028	0.035	0.049	0.065	0.083	0.109
Diámetro pulgadas							Diámetro pulgadas						
1/4"	18000	22400	31200	41600	53200		1/4"	0.10	0.12	0.16	0.19	0.22	0.25
3/8"	12000	14800	20800	27600	35600	46400	3/8"	0.16	0.19	0.26	0.33	0.39	0.47
1/2"	8800	11200	15600	20800	26400	34800	1/2"	0.21	0.26	0.36	0.46	0.56	0.69
5/8"	7200	8800	12400	16800	21200	28000	5/8"	0.27	0.33	0.46	0.59	0.73	0.91
3/4"	6000	7600	10400	14000	17600	23200	3/4"	0.33	0.41	0.56	0.72	0.90	1.13
1"	4400	5600	8000	10400	13200	17600	1"	0.44	0.55	0.76	0.99	1.23	1.57
1 1/4"	3600	4400	6400	8400	10800	14000	1 1/4"	0.55	0.69	0.95	1.25	1.57	2.02
1 1/2"	2800	3600	5200	6800	8800	11600	1 1/2"	0.67	0.83	1.15	1.51	1.91	2.46
2"		2800	4000	5200	6800	8800	2"		1.11	1.55	2.04	2.58	3.34

Ejemplo:
Para la tubería inoxidable de tipo 304 con una resistencia final de 85,000 P.S.I.
Multiplíquese los datos de la tabla por 8.5

Basada en la Fórmula: $P = 2f \frac{E}{D}$

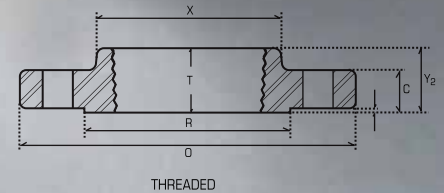
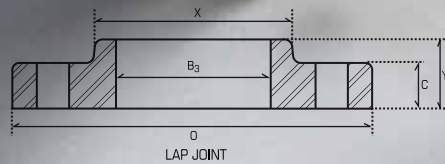
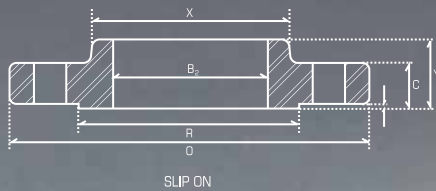
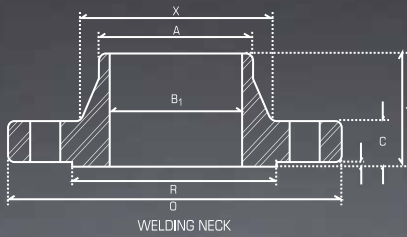
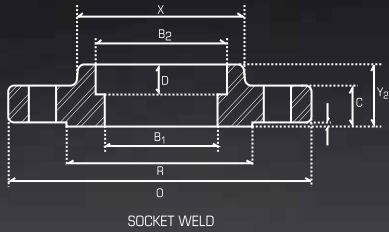
- f= Resistencia a la tensión en libras por pulgada cuadrada.
- D= Diámetro exterior en pulgadas.
- P= Presión en libras por pulgada cuadrada.
- E= Espesor de pared en pulgadas.

*P.S.I.- Libras por pulgada cuadrada.

*Los valores de esta tabla son para Aceros Inoxidables con bajo contenido de carbón. Para Aceros con contenido normal de carbón aumentar 5%.



BRIDAS FORJADAS 300 LIBRAS ASTM A182 ANSI B16.5



Nominal Size	Common Dimensions				Bore			Length Through Hub			Min. Thread Length T	Depth of Socket D	Dia. Hub at Bevel A	Fillet Radius r	Drilling		
	Out-side Dia. O	Thk. C	Raised Face Dia. R	Hub Dia. X	Welding* Neck Socket B1	Slip-on Socket B2	Lap Joint B3	Welding Neck Y1	Slip-on Threaded Socket Y2, T	Lap Joint Y3					Bolt Circle	Dia. Holes	No. Holes
Inch	mm.	mm.	mm.	mm.	mm.	mm.	mm.	mm.	mm.	mm.	mm.	mm.	mm.	mm.	mm.	mm.	mm.
1/2	3.75	0.56	1.38	1.50	0.62	0.88	0.90	2.06	0.88	0.88	0.63	0.38	0.84	0.13	2.63	0.63	4
3/4	4.63	0.63	1.69	1.88	0.82	1.09	1.11	2.25	1.00	1.00	0.63	0.44	1.05	0.13	3.25	0.75	4
1	4.88	0.69	2.00	2.13	1.05	1.36	1.38	2.44	1.06	1.06	0.69	0.50	1.32	0.13	3.50	0.75	4
1 1/4	5.25	0.75	2.50	2.50	1.38	1.70	1.72	2.56	1.06	1.06	0.81	0.56	1.66	0.19	3.88	0.75	4
1 1/2	6.13	0.81	2.88	2.75	1.61	1.95	1.97	2.69	1.19	1.19	0.88	0.63	1.90	0.25	4.50	0.88	4
2	6.50	0.88	3.63	3.31	2.07	2.44	2.46	2.75	1.31	1.31	1.13	0.69	2.38	0.31	5.00	0.75	8
2 1/2	7.50	1.00	4.13	3.94	2.47	2.94	2.97	3.00	1.50	1.50	1.25	0.75	2.88	0.31	5.88	0.88	8
3	8.25	1.13	5.00	4.63	3.07	3.57	3.60	3.13	1.69	1.69	1.25	0.81	3.50	0.38	6.63	0.88	8
3 1/2	9.00	1.19	5.50	5.25	3.55	4.07	4.10	3.19	1.75	1.75	1.44	—	4.00	0.38	7.25	0.88	8
4	10.00	1.25	6.19	5.75	4.03	4.57	4.60	3.38	1.88	1.88	1.44	—	4.50	0.44	7.88	0.88	8
5	11.00	1.38	7.31	7.00	5.05	5.66	5.69	3.88	2.00	2.00	1.69	—	5.56	0.44	9.25	0.88	8
6	12.50	1.44	8.50	8.13	6.07	6.72	6.75	3.88	2.06	2.06	1.81	—	6.63	0.50	10.63	0.88	12
8	15.00	1.63	10.63	10.25	7.98	8.72	8.75	4.38	2.44	2.44	2.00	—	8.63	0.50	13.00	1.00	12
10	17.50	1.88	12.75	12.63	10.02	10.88	10.92	4.63	2.63	3.75	2.19	—	10.75	0.50	15.25	1.13	16
12	20.50	2.00	15.00	14.75	12.00	12.88	12.92	5.13	2.88	4.00	2.38	—	12.75	0.50	17.75	1.25	16
14	23.00	2.13	16.25	16.75	13.25	14.14	14.18	5.63	3.00	4.38	2.50	—	14.00	0.50	20.25	1.25	20
16	25.50	2.25	18.50	19.00	15.25	16.16	16.19	5.75	3.25	4.75	2.69	—	16.00	0.50	22.50	1.38	20
18	28.00	2.38	21.00	21.00	17.25	18.18	18.20	6.25	3.50	5.13	2.75	—	18.00	0.50	24.75	1.38	24
20	30.50	2.50	23.00	23.13	19.25	20.20	20.25	6.38	3.75	5.50	2.88	—	20.00	0.50	27.00	1.38	24
22	33.00	2.63	25.25	25.25	21.25	22.22	22.25	6.50	4.00	5.75	3.13	—	24.00	0.50	29.25	1.63	24
24	36.00	2.75	27.25	27.63	23.25	24.25	24.25	6.63	4.19	6.00	3.25	—	24.00	0.50	32.00	1.63	24

*Bore size listed is std. base

WILSON STAINLESS

CONEXIONES SOCKETWELD

CONEXIONES ROSCADAS

CONEXIONES FUNDIDAS

BRIDAS FORJADAS 150 LIBRAS

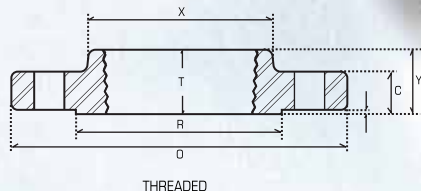
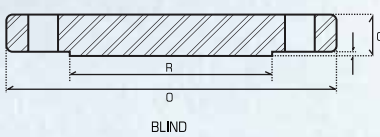
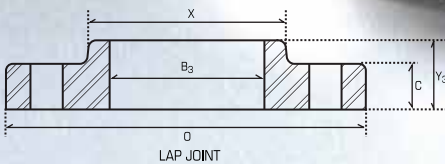
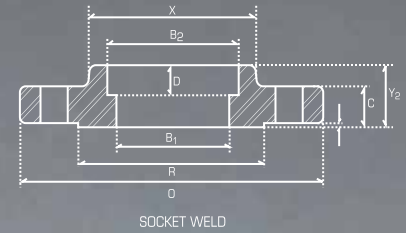
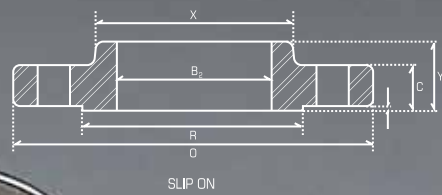
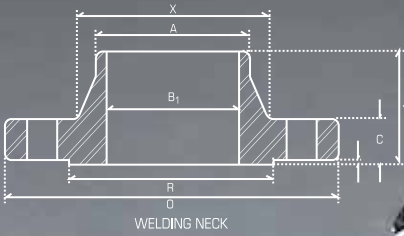
BRIDAS FORJADAS 300 LIBRAS

TUBING SIN COSTURA

PIPE SIN COSTURA

BRIDAS FORJADAS 150 LIBRAS ASTM A182 ANSI B16.5

Nominal Size Inch.	Common Dimensions				Bore			Length Through Hub			Drilling					
	Outside Dia. O mm.	Thk. C mm.	Raised Face Dia. R mm.	Welding* Hub Dia. X mm.	Neck Socket B1 mm.	Slip-on Socket B2 mm.	Lap Joint B3 mm.	Welding Neck Y1 mm.	Slip-on Threaded Socket Y2, T mm.	Lap Joint Y3 mm.	Depth of Socket D mm.	Dia. Hub at Bevel A mm.	Filet Radius r mm.	Bolt Circle mm.	Dia. Holes mm.	No. Holes
1/2	3.50	0.44	1.38	1.19	0.62	0.88	0.90	1.88	0.63	0.63	0.38	0.84	0.13	2.38	0.63	4
3/4	3.88	0.50	1.69	1.50	0.82	1.09	1.11	2.06	0.63	0.63	0.44	1.05	0.13	2.75	0.63	4
1	4.25	0.56	2.00	1.94	1.05	1.36	1.38	2.19	0.69	0.69	0.50	1.32	0.13	3.13	0.63	4
1 1/4	4.63	0.63	2.50	2.31	1.38	1.70	1.72	2.25	0.81	0.81	0.56	1.66	0.19	3.50	0.63	4
1 1/2	5.00	0.69	2.88	2.56	1.61	1.95	1.97	2.44	0.88	0.88	0.63	1.90	0.25	3.88	0.63	4
2	6.00	0.75	3.63	3.06	2.07	2.44	2.46	2.50	1.00	1.00	0.69	2.38	0.31	4.75	0.75	4
2 1/2	7.00	0.88	4.13	3.56	2.47	2.94	2.97	2.75	1.13	1.13	0.75	2.88	0.31	5.50	0.75	4
3	7.50	0.94	5.00	4.25	3.07	3.57	3.60	2.75	1.19	1.19	0.81	3.50	0.38	6.00	0.75	4
3 1/2	8.50	0.94	5.50	4.81	3.55	4.07	4.10	2.81	1.25	1.25	0.88	4.00	0.38	7.00	0.75	8
4	9.00	0.94	6.19	5.31	4.03	4.57	4.60	3.00	1.31	1.31	0.94	4.50	0.44	7.50	0.75	8
5	10.00	0.94	7.31	6.44	5.05	5.66	5.69	3.50	1.44	1.44	0.94	5.56	0.44	8.50	0.88	8
6	11.00	1.00	8.50	7.56	6.07	6.72	6.75	3.50	1.56	1.56	1.06	6.63	0.50	9.50	0.88	8
8	13.50	1.13	10.63	9.69	7.98	8.72	8.75	4.00	1.75	1.75	1.25	8.63	0.50	11.75	0.88	8
10	16.00	1.19	12.75	12.00	10.02	0.88	10.92	4.00	1.94	1.94	1.31	10.75	0.50	14.25	1.00	12
12	19.00	1.25	15.00	14.38	12.00	2.88	12.92	4.50	2.19	2.19	1.56	12.75	0.50	17.00	1.00	12
14	21.00	1.38	16.25	15.75	13.25	4.14	14.18	5.00	2.25	3.13	1.63	14.00	0.50	18.75	1.13	12
16	23.50	1.44	18.50	18.00	15.25	6.16	16.19	5.00	2.50	3.44	1.75	16.00	0.50	21.25	1.13	16
18	25.00	1.56	21.00	19.88	17.25	8.18	18.20	5.50	2.69	3.81	1.94	18.00	0.50	22.75	1.25	16
20	27.50	1.69	23.00	22.00	19.25	20.20	20.25	5.69	2.88	4.06	2.13	20.00	0.50	25.00	1.25	20
22	29.50	1.81	25.25	24.25	21.25	22.22	22.25	5.88	3.13	4.25	2.38	22.00	0.50	27.25	1.38	20
24	32.00	1.88	27.25	26.13	23.25	24.25	24.25	6.00	3.25	4.38	2.50	24.00	0.50	29.50	1.38	20



WILSON STAINLESS

CONEXIONES SOCKETWELD

CONEXIONES ROSCADAS

CONEXIONES FUNDIDAS

BRIDAS FORJADAS 150 LIBRAS

BRIDAS FORJADAS 300 LIBRAS

TUBING SIN COSTURA

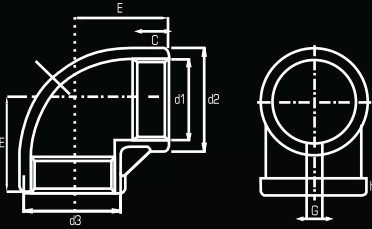
PIPE SIN COSTURA

CONEXIONES FUNDIDAS 150 LIBRAS ASTM A351

Codo 90° NPT

DIMENSIONES

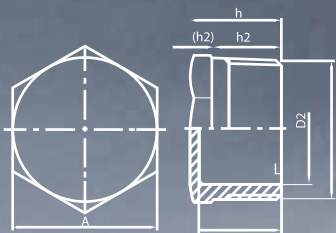
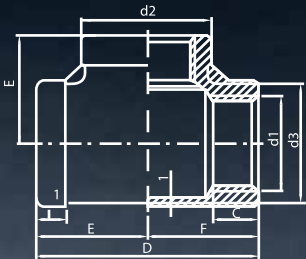
(ESPECIF/TAM)	1/4"	3/8"	1/2"	3/4"	1"	1 1/4"	1 1/2"	2"	3"	4"
d1 mm..	1/4"	3/8"	1/2"	3/4"	1"	1 1/4"	1 1/2"	2"	3"	4"
d2 mm..	18.3	21.7	26.6	32.1	39.5	49.2	54.3	68.2	99.0	125.0
C mm..	9.4	9.7	12.0	12.0	14.0	16.0	18.0	18.0	24.0	24.0
h mm..	6.0	6.5	7.5	8.5	10.0	11.0	12.0	13.0	15.0	15.0



Tee Recta NPT

DIMENSIONES

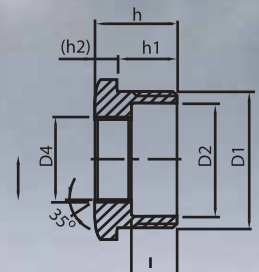
(ESPECIF/TAM)	1/4"	3/8"	1/2"	3/4"	1"	1 1/4"	1 1/2"	2"	3"	4"
d1 mm..	1/4"	3/8"	1/2"	3/4"	1"	1 1/4"	1 1/2"	2"	3"	4"
d2 mm..	18.3	21.7	26.6	32.1	41.0	49.2	55.5	68.2	99.0	125.0
C mm..	9.4	9.7	12.0	12.0	14.0	16.0	18.0	18.0	24.0	25.0
D mm..	38.0	46.0	54.0	64.0	76.0	90.0	96.0	114.0	156.0	192.0



Tapon macho NPT

DIMENSIONES

(ESPECIF/TAM)	1/4"	3/8"	1/2"	3/4"	1"	1 1/4"	1 1/2"	2"
A mm..	17.0	21.0	26.0	32.0	38.0	46.0	52.0	65.0
D2 mm..	-	11.3	14.6	19.9	25.8	34.5	39.5	51.5
h mm..	16.0	16.0	19.5	21.0	24.0	27.0	27.0	32.0



Reducción Bushing

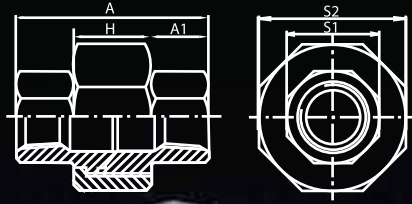
DIMENSIONES

(ESPECIF/TAM)	1/4" x 1/8"	3/8" x 1/4"	1/2" x 1/4"	1/2" x 3/8"	3/4" x 1/4"	3/4" x 3/8"	3/4" x 1/2"	1" x 1/4"	1" x 3/8"	1" x 1/2"	1" x 3/4"
A mm..	16.5	21.8	25.5	25.5	31.5	31.5	31.5	38.0	38.0	38.0	38.0
L mm..	-	-	13.4	18.4	18.4	15.0	23.5	23.5	20.0	20.0	19.0
h mm..	16.0	18.5	20.0	20.0	25.0	25.0	25.0	30.5	30.5	30.5	30.5



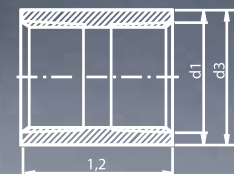
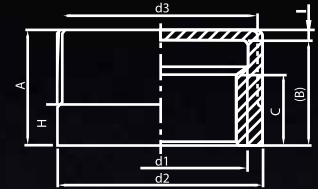
Tuerca Unión NPT

(ESPECIF/TAM)	DIMENSIONES							
	1/4"	3/8"	1/2"	3/4"	1"	1 1/4"	1 1/2"	2"
A±1.5 mm..	36.3	37.2	39.1	45.4	49.0	51.1	54.2	58.8
A1±0.5 mm..	10.5	11.0	11.6	14.9	15.5	14.5	15.0	16.4
H±0.5 mm..	15.0	15.0	15.0	15.5	18.0	21.3	22.2	25.2
S1±1.0 mm..	16.8	20.2	24.5	29.7	36.5	46.2	52.3	64.6
S2±1.0 mm..	27.6	34.0	39.5	46.7	54.0	63.9	73.5	86.9



Tapón Capa

(ESPECIF/TAM)	DIMENSIONES							
	1/4"	3/8"	1/2"	3/4"	1"	1 1/4"	1 1/2"	2"
d1 mm..	1/4"	3/8"	1/2"	3/4"	1"	1 1/4"	1 1/2"	2"
d2 mm..	18.3	21.7	26.6	32.1	39.5	49.2	55.5	68.2
A mm..	18.5	19.5	21.1	21.7	24.8	26.5	30.0	34.2
C mm..	9.4	9.7	10.0	11.0	15.0	17.5	18.0	18.0



Coples

(ESPECIF/TAM)	DIMENSIONES									
	1/4"	3/8"	1/2"	3/4"	1"	1 1/4"	1 1/2"	2"	3"	4"
d1 mm..	1/4"	3/8"	1/2"	3/4"	1"	1 1/4"	1 1/2"	2"	3"	4"
d3 mm..	18.5	21.5	26.5	32.0	39.5	48.5	54.5	66.5	100.0	129.0
L2 mm..	27.0	28.0	36.0	39.0	43.0	48.0	48.0	56.0	71.0	83.0

Reducción Bushing

(ESPECIF/TAM)	DIMENSIONES										
	1 1/4" X 3/4"	1 1/4" X 1"	1 1/2" X 1/2"	1 1/2" X 3/4"	1 1/2" X 1"	1 1/2" X 1 1/4"	2" x 1/2"	2" x 3/4"	2" x 1"	2" x 1 1/4"	2" x 1 1/2"
A mm..	46.0	46.0	51.8	51.8	51.8	51.8	62.5	62.5	62.5	62.5	62.5
L mm..	20.5	17.5	23.5	22.5	19.5	18.5	23.8	23.0	20.0	18.5	18.0
h mm..	31.5	31.5	33.5	33.5	33.5	33.5	34.0	34.0	34.0	34.0	34.0

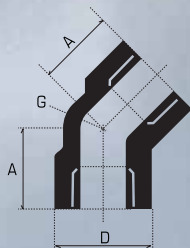
CONEXIONES ROSCADAS 3000 LIBRAS ASTM A182 ANSI B16.11



Codo 45°

Codo 45°

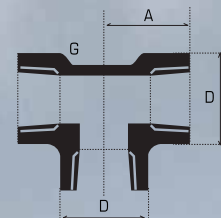
Nom. Pipe size	A mm.	D mm.	G mm.	Weight kg/pce
1/2"	25.4	38.1	4.09	0.32
3/4"	28.4	46.0	4.27	0.51
1"	33.3	55.6	4.98	0.85
1 1/2"	42.9	75.4	5.54	1.85
2"	43.7	84.1	6.05	3.00



Tee Recta

Nom. Pipe size	A mm.	D mm.	B mm.	Weight kg/pce
1/2"	33.3	38.1	10.92	0.52
3/4"	38.1	46.0	12.27	0.83
1"	44.5	55.6	14.73	1.38
1 1/2"	60.3	75.4	17.78	3.12
2"	63.5	84.1	19.05	4.00

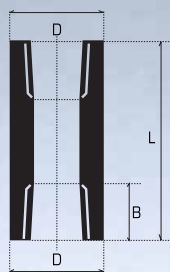
Tee Recta



Cople

Cople

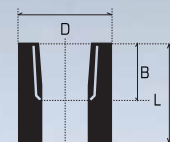
Nom. Pipe size	L mm.	D mm.	B mm.	Weight kg/pce
1/2"	47.6	28.6	10.92	0.14
3/4"	50.8	34.9	12.70	0.20
1"	60.3	44.5	14.73	0.40
1 1/2"	79.4	63.5	17.78	1.00
2"	85.7	76.2	19.05	1.90



Medio Cople

Nom. Pipe size	L mm.	D mm.	B mm.	Weight kg/pce
1/2"	23.8	28.6	10.92	0.07
3/4"	25.4	34.9	12.70	0.10
1"	30.2	44.5	14.73	0.20
1 1/2"	39.7	36.5	17.78	0.50
2"	42.9	76.2	19.05	0.95

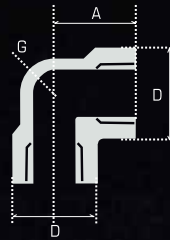
Medio Cople



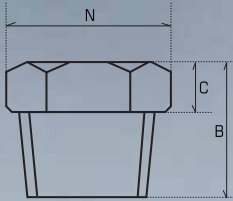
Codo 90°

Codo 90°

Nom. Pipe size	A mm.	D mm.	G mm.	Weight kg/pce
1/2"	28.6	38.1	4.09	0.40
3/4"	33.3	46.0	4.27	0.63
1"	38.1	55.6	4.98	1.10
1 1/2"	50.8	75.4	5.54	2.35
2"	60.3	84.1	6.05	3.30



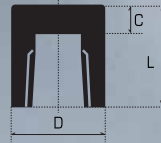
Tapón Macho



Tapón Macho

Nom. Pipe size	B mm.	N mm.	C mm.	Weight kg/pce
1/2"	20.0	22.0	8.0	0.08
3/4"	21.0	27.0	10.0	0.15
1"	25.0	35.0	10.0	0.25
1 1/2"	26.0	51.0	16.0	0.65
2"	27.0	64.0	18.0	1.10

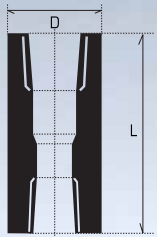
Tapón Capa



Tapón Capa

Nom. Pipe size	L mm.	D mm.	G mm.	Weight kg/pce	316L
1/2"	31.8	28.6	6.36	0.12	
3/4"	36.5	34.9	6.35	0.19	
1"	41.3	44.5	9.53	0.35	
1 1/2"	44.5	63.5	11.11	0.75	
2"	47.6	76.2	12.70	1.45	

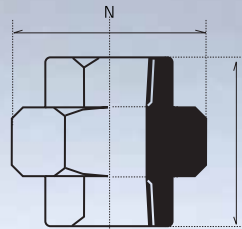
Cople Reducido



Cople Reducido

Nom. Pipe size	L mm.	D mm.	Weight kg/pce
1 x 1/2"	60.3	44.5	0.40
1 x 3/4"	60.3	44.5	0.40
1 1/4 x 1"	66.7	57.2	0.70
1 1/2 x 1"	79.4	63.5	1.00
2 x 1 1/2"	85.7	76.2	1.90

Tuerca Unión

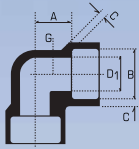


Tuerca Unión

Nom. Pipe size	L mm.	N mm.	Weight kg/pce
1/2"	50.0	43	0.40
3/4"	57.9	50	0.50
1"	63.5	60	1.00
1 1/2"	77.8	78	1.60
2"	87.3	95	2.50

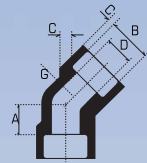


CONEXIONES SOCKETWELD 3000 LIBRAS ASTM A182 ANSI B16.11



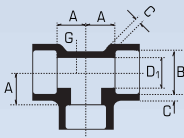
Codo 90°

Nom. Pipe size	B mm.	Depth of socket	C mm.	G mm.	D mm.	A mm.	Weight kg/pce	AISI 304L	AISI 316L
1/4"	14.10	9.53	3.30	3.02	8.86	11.11	0.09	•	•
3/8"	17.53	9.53	3.51	3.20	12.14	13.49	0.13	•	•
1/2"	21.72	9.53	4.09	3.73	15.42	15.88	0.25	•	•
3/4"	27.05	12.70	4.27	3.91	20.55	19.05	0.32	•	•
1"	33.78	12.70	4.98	4.55	26.26	22.23	0.52	•	•
1 1/4"	42.55	12.70	5.28	4.85	34.67	26.99	0.86	•	•
1 1/2"	48.64	12.70	5.54	5.08	40.51	31.75	1.12	•	•
2"	61.11	15.88	6.5	5.54	52.12	38.10	1.80	•	•



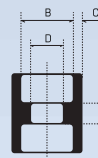
Codo 45°

Nom. Pipe size	B mm.	Depth of socket	C mm.	G mm.	D mm.	A mm.	Weight kg/pce	AISI 304L	AISI 316L
1/4"	14.10	9.53	3.30	3.02	8.86	7.94	0.08	•	•
3/8"	17.53	9.53	3.51	3.20	12.14	7.94	0.13	•	•
1/2"	21.72	9.53	4.09	3.73	15.42	11.11	0.18	•	•
3/4"	27.05	12.70	4.27	3.91	20.55	12.70	0.30	•	•
1"	33.78	12.70	4.98	4.55	26.26	14.29	0.45	•	•
1 1/4"	42.55	12.70	5.28	4.85	34.67	17.46	0.75	•	•
1 1/2"	48.64	12.70	5.54	5.08	40.51	20.64	0.90	•	•
2"	61.11	15.88	6.5	5.54	52.12	25.40	1.30	•	•



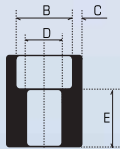
Tee Recta

Nom. Pipe size	B mm.	Depth of socket	C mm.	G mm.	D mm.	A mm.	Weight kg/pce	AISI 304L	AISI 316L
1/4"	14.10	9.53	3.30	3.02	8.86	11.11	0.11	•	•
3/8"	17.53	9.53	3.51	3.20	12.14	13.49	0.16	•	•
1/2"	21.72	9.53	4.09	3.73	15.42	15.88	0.34	•	•
3/4"	27.05	12.70	4.27	3.91	20.55	19.05	0.41	•	•
1"	33.78	12.70	4.98	4.55	26.26	22.23	0.65	•	•
1 1/4"	42.55	12.70	5.28	4.85	34.67	26.99	0.95	•	•
1 1/2"	48.64	12.70	5.54	5.08	40.51	31.75	1.33	•	•
2"	61.11	15.88	6.5	5.54	52.12	38.10	2.20	•	•



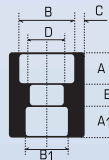
Cople

Nom. Pipe size	B mm.	Depth of socket	C mm.	D mm.	E mm.	Weight kg/pce	AISI 304L	AISI 316L
1/4"	14.10	9.53	3.30	8.86	6.35	0.05	•	•
3/8"	17.53	9.53	3.51	12.14	6.35	1.10	•	•
1/2"	21.72	9.53	4.09	15.42	9.53	0.14	•	•
3/4"	27.05	12.70	4.27	20.55	9.53	0.20	•	•
1"	33.78	12.70	4.98	26.26	12.70	0.30	•	•
1 1/4"	42.55	12.70	5.28	34.67	12.70	0.45	•	•
1 1/2"	48.64	12.70	5.54	40.51	12.70	0.60	•	•
2"	61.11	15.88	6.5	52.12	19.05	0.95	•	•



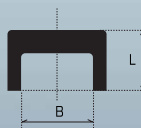
Medio Cople

Nom. Pipe size	B mm.	Depth of socket	C mm.	D mm.	E mm.	Weight kg/pce	AISI 304L	AISI 316L
1/4"	14.10	9.53	3.30	8.86	15.88	0.06	•	•
3/8"	17.53	9.53	3.51	12.14	17.46	0.11	•	•
1/2"	21.72	9.53	4.09	15.42	22.23	0.15	•	•
3/4"	27.05	12.70	4.27	20.55	23.81	0.21	•	•
1"	33.78	12.70	4.98	26.26	28.58	0.35	•	•
1 1/4"	42.55	12.70	5.28	34.67	30.16	0.50	•	•
1 1/2"	48.64	12.70	5.54	40.51	31.75	0.65	•	•
2"	61.11	15.88	6.5	52.12	41.28	1.10	•	•



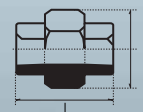
Cople Reducido

Nom. Pipe size	B mm.	B1 socket	A mm.	A1 mm.	C mm.	D mm.	E mm.	Weight kg/pce
3/8 - 1/4"	17.53	14.10	10	10	3.51	8.86	6.35	0.08
1/2 - 3/8"	21.72	17.53	10	10	4.09	12.14	9.53	0.12
3/4 - 1/2"	27.05	21.72	12.7	9.5	4.27	15.42	12.70	0.20
1 - 1/4"	33.78	27.05	12.7	12.7	4.98	20.55	12.70	0.30
1 1/4 - 1"	42.55	33.78	13	10	5.28	26.26	12.70	0.40
1 1/2 - 1"	48.64	33.78	13	10	5.54	34.67	12.70	0.50
1 1/2 - 1 1/4"	48.64	42.55	13	10	5.54	34.67	12.70	0.55
2 - 1 1/2"	61.11	48.64	15.9	12.7	6.05	40.51	22.23	0.95



Tapón Capa

Nom. Pipe size	B mm.	Depth of socket	L mm.	Weight kg/pce	AISI 316L
1/4"	14.10	11.11	19.05	0.06	•
3/8"	17.53	11.11	19.05	0.07	•
1/2"	21.72	12.70	22.23	0.14	•
3/4"	27.05	14.29	25.40	0.16	•
1"	33.78	15.88	26.99	0.30	•
1 1/4"	42.55	17.46	30.16	0.45	•
1 1/2"	48.64	19.05	31.75	0.55	•
2"	61.11	22.23	38.10	1.00	•



Tuerca Unión

Nom. Pipe size	B mm.	Depth of socket	L mm.	W mm.	Weight kg/pce	AISI 304L	AISI 316L
1/4"	14.10	9.53	37	32	0.20	•	•
3/8"	17.53	9.53	37	36	0.35	•	•
1/2"	21.72	9.53	38	41	0.40	•	•
3/4"	27.05	12.70	46	50	0.45	•	•
1"	33.78	12.70	52	60	1.00	•	•
1 1/4"	42.55	12.70	54	70	1.30	•	•
1 1/2"	48.64	12.70	56	78	1.70	•	•
2"	61.11	15.88	68	95	3.00	•	•



En Wilson Stainless contamos con la más amplia línea de productos de acero inoxidable para el manejo de fluidos, ahora disponibles dentro del mercado mexicano. Estas marcas reconocidas por su calidad y servicio en todos y cada uno de los países en los que están presentes, brindando seguridad y confianza, así como excelentes precios.

PRODUCTOS.

- Tubo de Cédula sin soldadura desde NPS 1/4" hasta NPS 36", en diferentes cédulas.
- Tubo de Calibrado sin soldadura desde O.D. 1/4" hasta O.D. 2", en diferentes calibres.
- Conexiones Soldables a tope y Niples sin soldadura en diferentes cédulas y diámetros.
- Conexiones Fundidas de 150 & 300 libras, desde NPS 1/8" a NPS 4", con extremos roscados o soldables.
- Conexiones Forjadas de 2000, 3000, 6000 y 9000 libras desde NPS 1/2" hasta NPS 4", con extremos roscados o soldables.
- Bridas Forjadas, en sus diferentes tipos desde NPS 1/2" hasta NPS 36".

Las aleaciones que mantenemos en inventario constante son AISI 304/304L y 316/316L, aunque también tenemos la capacidad de ofrecer otros aceros inoxidables austeníticos como AISI 310, 317, 321, 347, inoxidables de tipo dúplex, superdúplex y titanio en sus diferentes grados, entre otros.

CALIDAD

La producción está estrictamente apegada a las normas: ASTM, DIN, ASME, ANSI e ISO y cada orden es respaldada siempre con su mtr/certificado de calidad. Así mismo se efectúan las pruebas necesarias para garantizar el adecuado funcionamiento de cada producto.

SERVICIO:

No sólo la atención personalizada de vendedores en español nos caracteriza, sino que contamos también con servicio comercial y técnico post-ventas que puede resolver cualquier duda o situación que se presente. Esto, aunado al inventario permanente y entrega rápida, brindan una mayor tranquilidad a nuestros distribuidores y usuarios finales.

